

A simulation study of the effect of connectedness on genetic trend

E Hanocq*, D Boichard, JL Foulley

Station de génétique quantitative et appliquée, Institut national de la recherche agronomique, 78352 Jouy-en-Josas cedex, France

(Received 20 February 1995; accepted 9 October 1995)

Summary – A breeding scheme was simulated with four subpopulations over seven separate generations. Males were progeny tested before selection. A varying proportion of link sires were used across populations to estimate the genetic level of each subpopulation. The male replacement policy allowed some gene flow across subpopulations. Without any connection between subpopulations, the genetic differences between subpopulations were not estimable and the overall genetic trend was limited. With few connections (proportion of link sires = 1/16), the accuracy of the contrast between subpopulations was poor but the gene flow between subpopulations made it possible to increase the overall genetic trend, particularly for the first generations. A high level of connections improved the accuracy of the genetic evaluation but only slightly increased the genetic trend.

connectedness / genetic trend / progeny testing / design efficiency / selection strategy

Résumé – Étude par simulation de l'effet du degré de connexion sur le progrès génétique. Un schéma de sélection constitué de quatre sous-populations est simulé durant sept générations séparées. Les mâles sont sélectionnés à l'issue de leur testage sur descendance. Des mâles de connexion sont utilisés en proportion variable afin d'estimer le niveau génétique de chaque sous-population, ou groupe de taureaux. La politique de renouvellement adoptée permet l'existence de flux de gènes entre les sous-populations. En l'absence de connexion, les différences génétiques entre groupes de taureaux ne sont pas estimables et le progrès génétique global est limité. En présence de connexions en faible quantité (proportion de taureaux de connexion de 1/16), la précision des contrastes entre sous-populations est réduite mais le flux de gènes existant permet l'augmentation du progrès génétique global, en particulier à la première génération de sélection. Un degré de connexion important améliore la précision de l'évaluation génétique mais l'accroissement supplémentaire du progrès génétique est faible.

connexion / progrès génétique / testage sur descendance / efficacité des dispositifs / stratégie de sélection

* Correspondence and reprints to SAGA, INRA, BP 27, 31326 Castanet-Tolosan cedex, France.

INTRODUCTION

The animal model BLUP has become the method of choice for genetic evaluation with linear models because of its desirable properties. One of these properties is that breeding values are estimated at the population level and can be compared across levels of fixed effects, for instance, across herds or regions. However, this property is true only if the corresponding contrasts are accurately estimable or, equivalently, if the design is connected.

The concept of connectedness in experimental design was first defined by statisticians (Bose, 1947; Weeks and Williams, 1964; Searle, 1986). To prevent lack of connectedness, Foulley and Clerget Darpoux (1978) and Foulley et al (1983) developed the use of reference sire progeny testing schemes. Application of reference sire systems has been of major importance in the development of selection schemes in sheep and beef cattle (Foulley and Ménéssier, 1978; Foulley and Bibé, 1979; Morris et al, 1980; Foulley and Sapa, 1982; Miraei Ashtiani and James, 1991, 1992, 1993). Geneticists also developed methods to check for disconnection (Peterson, 1978; Fernando et al, 1983) or to measure the degree of connectedness in a design (Foulley et al, 1984, 1990, 1992). The latter authors introduced a continuous measure of the orthogonality of a design, instead of the previous all-or-none statistical definition of connectedness. All these methods analyze the structure of the experimental design, ie, the distribution of data across the levels of factors involved in the model.

By influencing data structure, and consequently the structure of the error variance-covariance matrix of the estimators, connectedness also affects the efficiency of a breeding program. Foulley et al (1983) and Miraei Ashtiani and James (1991, 1992) showed how prediction error variances (PEV) of estimated breeding values or linear combinations of estimated breeding values are affected by the degree of connectedness. Spike and Freeman (1977) analytically derived the effect on selection differential of a loss of accuracy in estimated breeding values. Simianer (1991) illustrated this effect by simulation. Although the PEV approach is very useful in optimizing a breeding scheme, as in Miraei Ashtiani and James (1992), it provides only a limited picture of the effect of connectedness.

The analytical study of the effect of connectedness on response to selection requires the calculation of selection intensity, as in Smith and Ruane (1987) or Ducrocq and Quaas (1988), in a complex population with subpopulations of different genetic levels. Such an analytical approach assumes that the genetic differences between subpopulations are known. Because the degree of connectedness affects the accuracy of these contrasts, it seemed to be more convenient to study the effect of connectedness on genetic gain by simulation.

The goal of this paper was to study the relationship between connectedness and genetic trend in a simple but realistic breeding scheme. The simulated population was originally derived from French Holstein dairy cattle. In this real population, the candidates for selection are ranked on a national level, although breeding is organized at a regional level with AI studs independent of each other.

MATERIAL AND METHODS

Description of the simulated breeding scheme

General overview

The population was divided into M subpopulations of the same size and structure. Each subpopulation corresponded to an independent company operating in its own region and included N males and $N.n$ females per generation. The generations were separate and there were no female exchanges between subpopulations. Selection was applied on a single trait, with heritability h^2 , phenotypic variance σ_p^2 and genetic variance σ_a^2 . The expression of the trait was limited to the females and was affected by a region \times generation environmental effect. The females were not selected. After a progeny test, $M.N.\pi$ sires of males were selected for each generation to sire $1/\pi$ sons each.

Males were simulated individually, whereas the females were only considered via cohorts defined according to subpopulation and generation. This assumption reduced the computational requirements to a large extent but remained realistic, because there was neither selection of females nor within-subpopulation assortative matings. Table I shows the parameters used in the simulation.

Table I. Parameters used in the simulation.

<i>Parameter</i>	<i>Notation</i>	<i>Value</i>
Number of subpopulations	M	4
Number of males per subpopulation and generation	N	48
Number of daughters per male	n	50
Heritability	h^2	0.25
Phenotypic variance	σ_p^2	1
Selection rate of sires	π	1/3
Proportion of connecting sires	p	0, 1/16, 1/4, 1
Proportion of connecting daughters	q	0.2
Within-subpopulation forced replacement	α	0.25 (1 when $p = 0$)

The connections among subpopulations were initially nonexistent and were gradually generated through two different mechanisms. First, planned connections were established using a proportion p of link sires in several subpopulations. Each link sire belonging to subpopulation i sired $nq/2$ daughters in subpopulations $i + 1$ and $i - 1$, and $n(1 - q)$ daughters in subpopulation i . The other males sired n daughters in their own subpopulation only. Secondly, unplanned links were generated through the policy of male replacement, which allowed some exchange among subpopulations. Each subpopulation partly replaced its males by keeping the sons of its own $\alpha\pi N$ best sires. The rest were supplied from the whole population according to the following procedure. Among the $(1 - \alpha\pi).N.M$ sires who were still candidates, the $(1 - \alpha).\pi.N.M$ best ones were selected and randomly mated to females from their own subpopulation to procreate $1/\pi$ young males each.

These young males were allocated in priority to their subpopulation of origin. Males in excess in one subpopulation were then randomly allocated across the other subpopulations. Therefore, the rate of male replacement within-subpopulation might vary from α to 1, and on average increased with the genetic level of the subpopulation. Such a policy allowed large gene flows across subpopulations, while maintaining a clear advantage for the best ones.

Simulation procedures

At generation 1, the subpopulations were completely disconnected and independent of each other. The males were unrelated. The average genetic level of males ($gm_i^{[1]}$) and females ($gf_i^{[1]}$) was the same within a subpopulation i , but differed among subpopulations. It was arbitrarily fixed to $gm_i^{[1]} = gf_i^{[1]} = 0.4(i - 1)\sigma_a$. This assumption corresponded to a between-subpopulation variance equal to 0.05. At generation 1, the breeding value of male j of subpopulation i was written as

$$a_{ij}^{[1]} = gm_i^{[1]} + s_{ij}^{[1]} \quad [1]$$

where s_{ij} was assumed to be normally distributed $N(0, \sigma_a^2)$. At generation t ($t > 1$), the breeding value of male k offspring of sire j was simulated as follows:

$$a_k^{[t]} = \frac{1}{2}gf_i^{[t-1]} + \frac{1}{2}a_j^{[t-1]} + \varepsilon_k \quad [2]$$

where ε_k was assumed to be normally distributed $N(0, 3/4\sigma_a^2)$. The dam of k belonged to the subpopulation i of the sire j .

The average female genetic level $gf_i^{[t]}$ in subpopulation i at generation t was simulated according to equation [3]

$$gf_i^{[t]} = \frac{1}{2}gf_i^{[t-1]} + \frac{1}{2} \frac{1}{nN} \mathbf{x}_i'^{[t-1]} \mathbf{a}^{[t-1]} \quad [3]$$

where $\mathbf{a}^{[t-1]}$ is the vector of breeding values of the males at generation $t - 1$ and $\mathbf{x}_i'^{[t-1]}$ is the vector of numbers of daughters of each male of generation $t - 1$ in subpopulation i . Because of the large number of females contributing to $gf_i^{[t]}$, no random variation was assumed to affect $gf_i^{[t]}$, which was assumed to be equal to its expectation.

The average female genetic level per subpopulation and generation accounted for the individual breeding value of each sire used, weighted by the number of daughters. Therefore females profited from the genetic gain due to male selection, and transmitted this advantage to their male and female progeny. Notice that the breeding value $a_k^{[t]}$ of each male and the expected level of each female group $gf_i^{[t]}$ at generation t could be written as a linear combination of the initial levels ($gm^{[1]}$, $gf^{[1]}$) and the within-group breeding values of males of generations 1 to $t - 1$. This property was used in the genetic evaluation, as will be explained later.

At generation 1, the environmental effect (β) differed across subpopulations and was defined arbitrarily as $\beta_i^{[1]} = -0.4(i - 1)\sigma_p$. During the succeeding generations,

it was defined according to the following rule ($\beta_i^{[t]} = \beta_{i+1}^{[t-1]}$; $i = 1, M - 1$ and $\beta_M^{[t]} = \beta_1^{[t-1]}$), to avoid any systematic association between genetic and environmental effects.

A sire born at generation t had daughters with performance in generation $t + 1$. The average performance y_{jr} of n_{jr} daughters of sire j in subpopulation r was simulated according to equation [4]

$$y_{jr}^{[t+1]} = \mu + \beta_r^{[t+1]} + \frac{1}{2}gf_r^{[t]} + \frac{1}{2}a_j^{[t]} + e_{jr}^{[t+1]} \quad [4]$$

where μ is a mean and $e_{jr}^{[t+1]}$ is assumed to be normally distributed:

$$N \left[0, \frac{\sigma_p^2}{n_{jr}} \left(1 - \frac{h^2}{4} \right) \right]$$

Genetic evaluation

It was not possible to fit an animal model to the data since the individual female records were not generated. Its use would actually be of limited interest due to the absence of assortative mating and female selection. However, the model of analysis should adequately fit the simulated situation and should explicitly account for the differences in female genetic levels across subpopulations and generations.

Because the female genetic level was entirely determined by the contribution of founder groups and the male ancestors, an equivalent model involving only the environmental effects β , the founder effects

$$\mathbf{g} = \begin{pmatrix} \mathbf{gm}^{[1]} \\ \mathbf{gf}^{[1]} \end{pmatrix}$$

and the within-subpopulation sire effects \mathbf{s} , could be written as follows, by using equations [1–4]:

$$\mathbf{y} = \mathbf{X}\beta + \mathbf{H}\mathbf{g} + \mathbf{W}\mathbf{s} + \mathbf{e} \quad [5]$$

with $\text{Var}(\mathbf{s}) = \mathbf{A}\sigma_a^2$, where \mathbf{A} is the relationship matrix between males, ignoring relationships through females, and \mathbf{H} is an incidence matrix containing the probability that genes of females with records originated from each founder group. The matrix \mathbf{W} could be expressed as $\mathbf{W} = \mathbf{Z} + \mathbf{\Delta}$, where \mathbf{Z} was the incidence matrix relating each sire to the performance of his daughters. $\mathbf{\Delta}$ was defined in such a way that it accounted for all the males who determined the genetic level of the female ancestors of the females with records. Its general term δ_{ij} was not zero for any sire j of a female ancestor of the cohort i of females with data. Its value was the expected proportion of i 's genes originating from j . For instance, as shown in figure 1, the contribution δ_{12} of male 2 to the female cohort 1 with data was $n_2/4Nn$, assuming n_2 was the number of daughters of sire 2 in cohort 3. As a consequence, $\mathbf{\Delta}$ was quite dense. In practice, because the number of generations remained low (seven in the present simulation), $\mathbf{\Delta}$ was restricted to the relationships presented in figure 1 with negligible consequences. This methods was validated by the good agreement

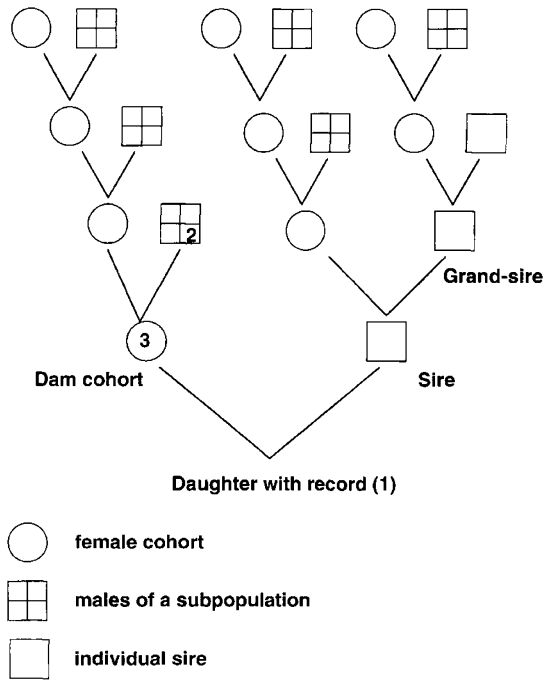


Fig 1. Relationships accounted for to determine the genetic level of the female ancestors of a daughter with record in generation 5.

between true and estimated genetic trends and was found to satisfactorily describe the gene flow through the females. This model was solved iteratively as:

$$\mathbf{y} - \Delta \mathbf{s}^{(\mathbf{I}-1)} = \mathbf{X}\boldsymbol{\beta}^{(\mathbf{I})} + \mathbf{H}\mathbf{g}^{(\mathbf{I})} + \mathbf{Z}\mathbf{s}^{(\mathbf{I})} \quad [6]$$

where \mathbf{I} is the iteration number.

Situations compared

Four situations were compared: one situation denoted S1 without any connection ($p = 0$ and $\alpha = 1$) and three situations with increasing connection levels (S2: $p = 1/16$; S3: $p = 1/4$; S4: $p = 1$) and a limited replacement rate forced within-subpopulation to $\alpha = 0.25$. For each situation, 60 replicates were run. Each replicate involved the following sequence repeated over seven generations: generation of animals, genetic evaluation, selection of sires, and computation of connectedness criteria. The evaluation step used FSPAK software (Perez-Enciso et al, 1994).

Criteria for measuring the effect of connectedness

The impact of connectedness was measured in different ways. The first criterion was the true genetic trend. This illustrates both the gene flow between subpopulations

and the increase in the accuracy of the evaluation, particularly among subpopulations. Moreover, it is the most direct method of appreciating the efficiency of the design.

The quality of the genetic evaluation was measured by the bias in the estimated genetic trend, by the mean square error (MSE) pertaining to either individual sires or subpopulation \times generation means, and by the squared correlation between true and estimated breeding values over seven generations. This criterion was quite similar to a coefficient of determination and was called 'CD', although it was not defined in reference to the genetic variance of the base population.

The connection level of the design was ascertained via the sampling error variance of the male and female founder group effects as proposed by Foulley et al (1992). Three criteria were used: the determinant of the error variance-covariance matrix of the group effects, with or without the environmental effect in the model ($|\mathbf{C}_F|^{1/(M-1)}$ and $|\mathbf{C}_R|^{1/(M-1)}$ respectively), and the criterion proposed by Foulley et al (1992)

$$\gamma^* = \frac{|\mathbf{C}_R|^{1/(M-1)}}{|\mathbf{C}_F|^{1/(M-1)}}$$

applied to those group effects. γ^* measures the relative loss in accuracy due to the fitting of the environmental effect in the model.

RESULTS

Effect of connectedness on genetic trend

Genetic trend in the whole population

Figure 2 shows the change of the overall genetic level in the absence of connectedness (situation S1). The pattern of this trend was typical and found for every situation. It reflected the absence of selection between generations 1 and 2, a large genetic gain ($0.46\sigma_a$) between generations 2 and 3, ie, during the first selection cycle, and afterwards, a quasi-linear genetic trend from generation 3 to generation 7 ($0.21\sigma_a$). The overall genetic trend was satisfactorily estimated ($0.47\sigma_a$ in generation 3, $0.19\sigma_a$ thereafter) but the genetic level was severely underestimated ($-0.60\sigma_a$).

In connected situations (S2 to S4), the effect on the overall genetic trend was found to be quite similar whatever the connection level. Figure 3 presents the situation S3 with $p = 1/4$. After a first stage without selection, which generated the first links between groups, the genetic gain reached $0.61\sigma_a$ at the first selection cycle and $0.25\sigma_a$ thereafter. The initial genetic level was slightly underestimated, as was the asymptotic genetic trend. These small biases tended to disappear when the connection level increased.

The major contribution of connectedness to the whole population was a large increase in genetic trend ($+20\%$) at each selection cycle. However, increasing connectedness only slightly improved the estimation of genetic trend.

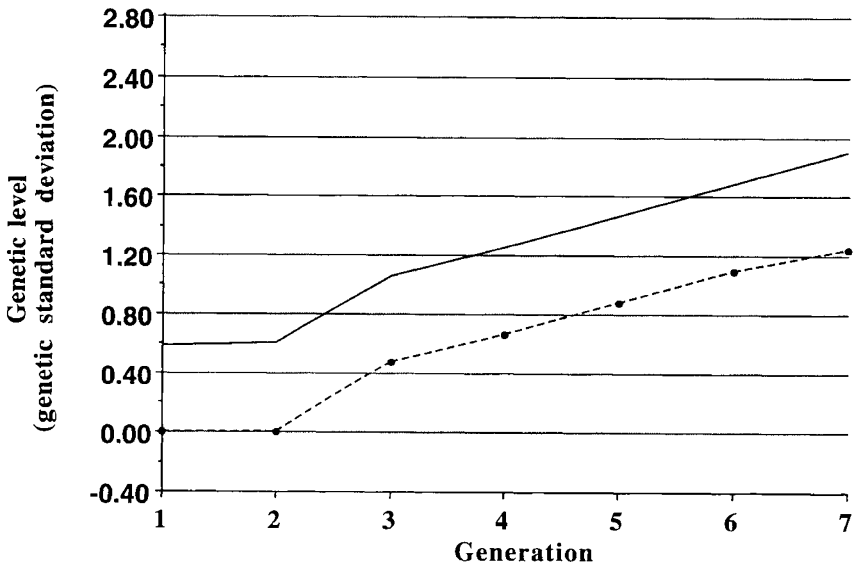


Fig 2. True and estimated genetic trends in the whole population in a disconnected situation (S1, $p = 0$) (true values: —; estimated values: —●—).

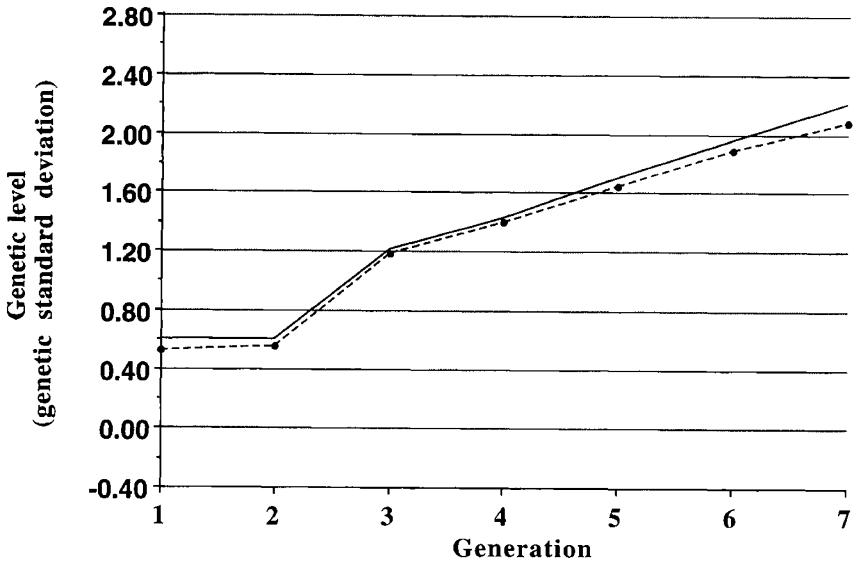


Fig 3. True and estimated genetic trends in the whole population in a connected situation (S3, $p = 1/4$) (true values: —; estimated values: —●—).

Within-subpopulation genetic trend

Figure 4 shows the change in genetic level of each subpopulation without connections. Mean trends were parallel and depended only on the initial level. However, the estimated curves (fig 5) were confounded, illustrating that genetic differences among groups were not estimable.

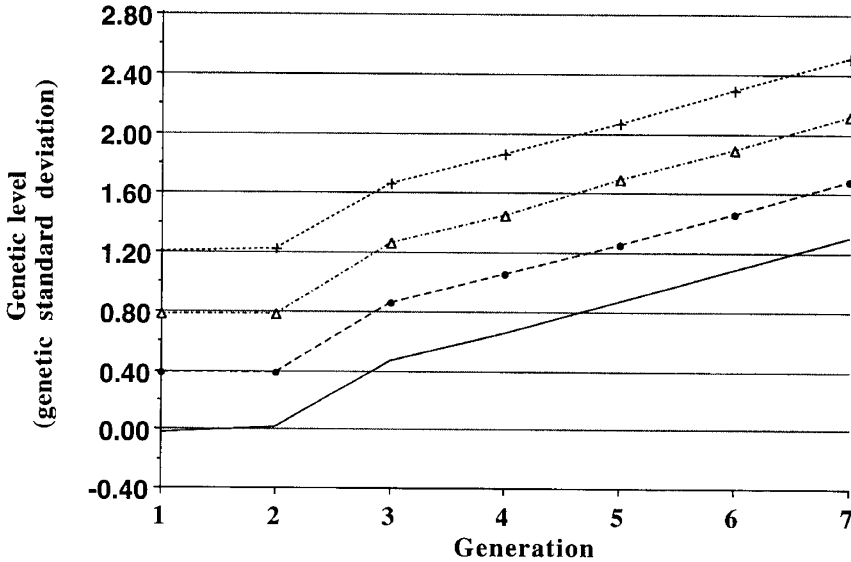


Fig 4. True within-subpopulation genetic trend in a disconnected situation ($S1, p = 0$) (subpopulation 1: —; subpopulation 2: —●—; subpopulation 3: —△—; subpopulation 4: —+—).

In the connected situations (fig 6), the response was very different across subpopulations. At the first selection cycle, genetic gains reached $0.88, 0.61, 0.47$ and $0.47\sigma_a$ for the subpopulations 1 to 4, respectively, and $0.28, 0.26, 0.23$ and 0.21 in the subsequent steps. The subpopulations with the lowest initial level exhibited the largest gains due to a significant gene flow between populations. Genetic differences across subpopulations decreased over time. Between extreme subpopulations, this difference decreased from $1.2\sigma_a$ initially to $0.49\sigma_a$ at generation 7. However, due to the replacement policy chosen in this study, the subpopulations with the highest initial level kept a clear advantage over time, while strongly contributing to the overall genetic gain.

The genetic trend was always well estimated (fig 7): $0.89, 0.66, 0.50$ and $0.46\sigma_a$ at the first selection cycle, and $0.25, 0.24, 0.20$ and 0.20 thereafter. In contrast, differences among subpopulations were unbiased only in the highly connected situation ($p = 1$). These differences appeared to be overestimated in $S2$ (ie, when the proportion of link sires was $p = 1/16$) and underestimated in $S3$ ($p = 1/4$). However, these biases were small enough to provide the correct ranking between subpopulations and to efficiently orientate the gene flows. The true genetic trends

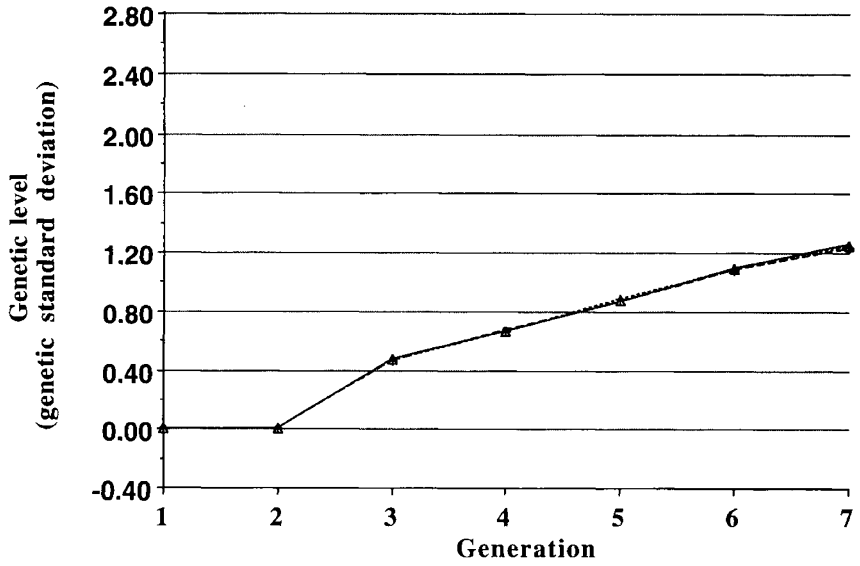


Fig 5. Estimation of within-subpopulation genetic trend in a disconnected situation (S1, $p = 0$) (subpopulation 1: —; subpopulation 2: —●—; subpopulation 3: —△—; subpopulation 4: ···+···).

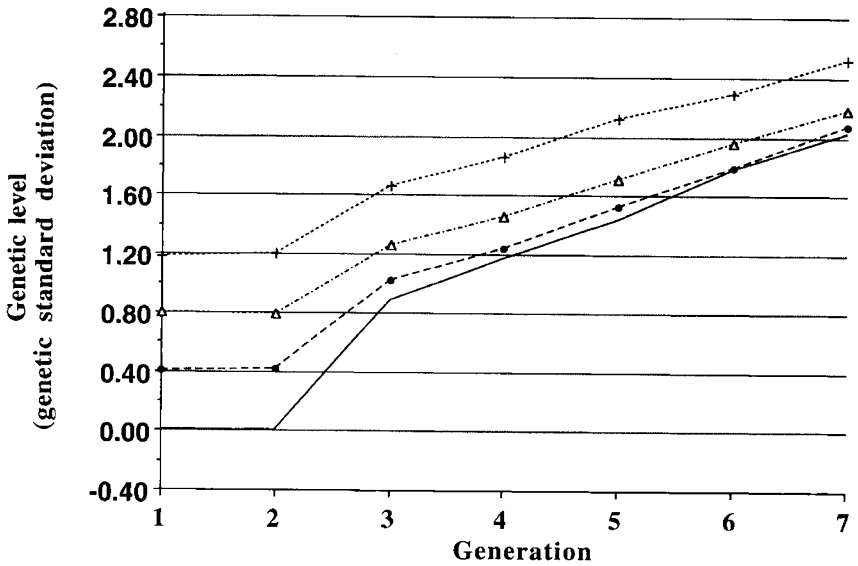


Fig 6. True within-subpopulation genetic trend in a connected situation (S3, $p = 1/4$) (subpopulation 1: —; subpopulation 2: —●—; subpopulation 3: —△—; subpopulation 4: ···+···).

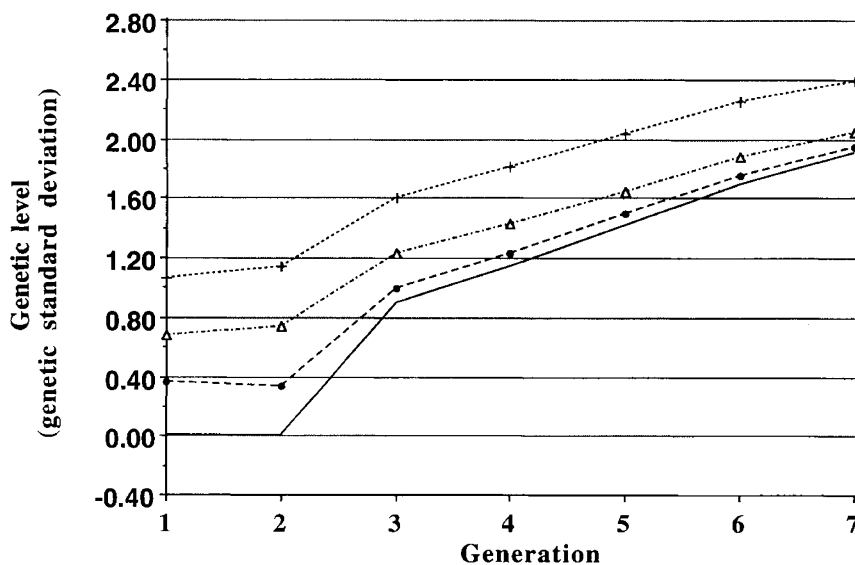


Fig 7. Estimation of within-subpopulation genetic trend in a connected situation (S3, $p = 1/4$) (subpopulation 1: —; subpopulation 2: —●—; subpopulation 3: —△—; subpopulation 4: ···+···).

were, consequently, only slightly affected by the connection level, provided that it was not zero.

Gene flows across subpopulations and, therefore, the overall genetic gain depended on both differences in initial genetic levels and the replacement policy. When the differences in initial genetic levels were fixed to zero, connectedness did not succeed in increasing the genetic trend. Similarly, when the replacement policy did not allow gene flow across subpopulations ($\alpha = 1$), the genetic differences across subpopulations were well estimated but could not be used in selection, and the genetic trend was not increased.

Table II. True and estimated asymptotic genetic responses, mean square error (MSE) relative to individual males and to the subpopulation \times generation means, and squared correlation between the true and estimated breeding values (“CD”).

	<i>True asymptotic response (σ_a)</i>	<i>Estimated response (σ_a)</i>	<i>MSE (males)</i>	<i>MSE (populations)</i>	<i>“CD”</i>
Situation S1 ($p = 0$)	0.21	0.19	0.804	0.597	0.67
Situation S2 ($p = 1/16$)	0.24	0.23	0.396	0.187	0.77
Situation S3 ($p = 1/4$)	0.25	0.23	0.286	0.080	0.81
Situation S4 ($p = 1$)	0.25	0.25	0.250	0.044	0.83

Table III. Accuracy and standardized coefficients of connectedness (γ^*) relative to female and male ancestor groups.

<i>Situations</i>	<i>Male ancestor groups</i>			<i>Female ancestor groups</i>		
	$ C_R ^{\frac{1}{3}}$	$ C_F ^{\frac{1}{3}}$	γ^*	$ C_R ^{\frac{1}{3}}$	$ C_F ^{\frac{1}{3}}$	γ^*
Situation S1 ($p = 0$)	0.501	1.000	0.501	0.501	1.000	0.501
Situation S2 ($p = 1/16$)	0.149	0.154	0.967	0.144	0.204	0.704
Situation S3 ($p = 1/4$)	0.041	0.046	0.894	0.036	0.076	0.469
Situation S4 ($p = 1$)	0.014	0.019	0.768	0.009	0.037	0.233

C: error variance–covariance matrix of the group effect, including (F) or excluding (R) the environmental effect in the model.

Influence of connectedness on the accuracy of estimates

Except for γ^* , which is a relative measure of connectedness, all the criteria showed an increase in accuracy with an increase in the proportion p of connecting males (tables II and III). This trend was not linear. The gain in individual accuracy was very large for the introduction of a small level of connections, from $p = 0$ to $p = 1/16$, whereas it was much less for a higher level of connections, ie, from $p = 1/4$ to $p = 1$. As an illustration, the MSE pertaining to individual male breeding values was divided by 2.03 when p increased from 0 to $1/16$, and by only 1.14 when p increased from $1/4$ to 1. Similarly, the CD reached 0.67, 0.77, 0.81 and 0.83 for p equal to 0, $1/16$, $1/4$ and 1, respectively.

The advantages of having a high connectedness level were more obvious for criteria related to group means. The MSE for the average male level per generation \times subpopulation decreased gradually when p increased. A similar pattern was observed with the standardized error variance of the groups. These determinants decreased when p increased, illustrating the increase in accuracy due to connectedness. This increase was much more rapid for male than for female founder groups when the full model was used. As there were no female exchanges between subpopulations, the only connections among the female founder groups were due to the genes of the dams of the connecting or exchanged sires. Whatever the considered situation, the inequality $|C_R|^{(1/(M-1))} < |C_F|^{(1/(M-1))}$ showed that the introduction of environmental effects always induced a loss in accuracy. Surprisingly, criterion γ^* became worse when the connectedness increased. In fact, γ^* is a relative criterion measuring the cost of estimating an effect in a given design. The decrease in γ^* when p increased simply means that the relative loss in accuracy due to the estimation of environmental effects was proportionally larger when there was more overall connectedness.

DISCUSSION AND CONCLUSION

The genetic response is highest after the first cycle of selection. This is due to the initial male and female genetic level, assumed to be the same within a

subpopulation. During the first cycle of selection only males were selected. This results in a one-generation genetic lag (Bichard, 1971) between unselected male and female populations.

Without connections, subpopulations with the same structure and size apply independently the same selection intensity and have the same genetic response. Establishing connections boosts the genetic trend of the whole population and introduces a heterogeneity of response between subpopulations. The response of the lowest level subpopulations strongly increases. These results are in agreement with Smith and Banos (1991) who compared the efficiency of selection applied within either the whole population or closed subpopulations. They also found that connections were more beneficial for subpopulations with a lower initial genetic level and a smaller size. However, the present study shows that the subpopulation with the highest initial level can also obtain a genetic trend equal to or greater than that without connections.

The increase in genetic trend with connections is due to a gene flow from subpopulations having a high genetic level to subpopulations with a low genetic level. The differences in the average genetic levels gradually decrease across subpopulations. The convergence rate depends strongly on the replacement policy, particularly on the proportion of forced within-subpopulation replacement. Homogenization is also faster when the initial genetic differences are larger, in agreement with Smith and Banos (1991). It also depends on the selection intensity. The higher the selection intensity, the greater the proportion of selected animals from the best subpopulation and the larger the gene flow between subpopulations. This is in agreement with many studies (Robertson, 1961; Burrows, 1984; Verrier et al, 1990; Wray and Thompson, 1990; Quinton et al, 1992). The impact of gene flow can be illustrated by the change over time of the contribution of founder groups to the gene pool of the population.

Another more classical interpretation of the advantage of using connections to increase genetic trend is the increase in genetic variance, due to the additional between-subpopulations variability, which is not available with traditional selection using closed subpopulations (James, 1982). This study, in agreement with Miraei Ashtiani and James (1993), shows that establishing connections within a large population does not improve the genetic response when the initial genetic differences across subpopulations are non-existent, provided that subpopulations are large enough.

The lack of connection induces a large bias in the estimation of the genetic level of the subpopulations, because the differences among subpopulations are not estimable and are assumed to be zero. However, even without connections between subpopulations, the overall genetic trend, identical to the average within-subpopulation genetic trend, is estimable. In contrast, the differences between subpopulations become estimable even with a limited degree of connectedness ($p = 1/16$), which turned out to be sufficient to direct gene flows across subpopulations in the expected direction. However, the accuracy of the estimated mean genetic level per generation \times subpopulation gradually increases with the connection level. Finally, it could be concluded that genetic trend could be increased when subpopulations have different initial genetic levels, when connectedness is large enough to make these differences estimable, and when the selection and replacement policy allows

one to take advantage of the best genes by appropriate gene flows. Although planned connections are usually hard to establish, at least at the beginning, a rather small amount may be sufficient because they are rapidly and involuntarily completed by the quantitatively larger gene flows.

The accuracy of the individual genetic evaluation increases with the proportion of connecting sires but this increase is not linear with p . The marginal increase is high when p is close to zero and is much lower for higher values of p . Similarly, in connected situations, the accuracy of the estimated genetic trend only slightly increases with p . This relatively small impact of the proportion of link sires may be explained by replacement rules which strongly connect the different subpopulations. The accuracy of the estimates of contrasts between groups, measured in the full model by $|\mathbf{C}_F|^{(1/(M-1))}$ or in the reduced model by $|\mathbf{C}_R|^{(1/(M-1))}$, increased as expected, with p . However, it increases more rapidly in the reduced model than in the full model. Consequently, the ratio γ^* decreases with p . This trend means that accounting for the environmental effect leads to a higher relative loss in accuracy when the connectedness is high. In contrast, when connectedness is low, the accuracy is already low in the reduced model and the relative loss of accuracy is limited when adding the environmental effect to the model. This result shows clearly that γ^* is a qualitative measure of connectedness in a design, whereas the other criteria provide an absolute measure of accuracy, suggesting that the three criteria \mathbf{C}_R , \mathbf{C}_F and γ^* should be used jointly to compare different designs.

Theoretically, connectedness should be analyzed at the individual level, by comparing the prediction error variance of the contrasts of interest between breeding values. When the model includes a fixed group effect, as in the present study, the breeding value has a fixed component due to groups and a within-group random component. Because the error variance of the random component is upwardly bounded while that of the fixed component is not, the limiting factor in the genetic evaluation is the group effect in situations of low level of connectedness. Studying connectedness for individuals, within groups, is only relevant when the connection between groups is not limiting. When computation of PEV is impossible, Kennedy and Trus (1993) proposed using the proportion of founder genes to obtain an approximate measure of connectedness. Connectedness has its own dynamics closely linked to the selection policy applied. For instance, better connections in the first generations lead to a higher realized selection intensity and therefore a higher diffusion of the genes of the best groups in the whole population. Because the contribution of the weaker groups decreases, the between-group connection measure after several generations may be worse than in a design with less initial connections, which preserves more efficiently the original genetic diversity.

In contrast, when the emphasis is put on the random component, particularly when there is no group effect in the model, the generalized CD, as proposed by Laloe (1993), is appropriate for characterizing the quality of the evaluation. It accounts for the amount of information as well as the balance of the design. As proposed by Foulley et al (1983), it would also be possible to compute the CD of the linear combinations of breeding values for a restricted number of contrasts of major interest.

As connectedness is closely related to gene flows, breeding companies may be concerned by its advantage for their own interest. Connectedness is essential for an

objective inter-line comparison. Notice that the attitude of breeding companies towards connectedness may heavily depend on the economic context, eg, competition vs cooperation or a mixture of both. An appropriate replacement policy may ensure that companies with the highest level maintain their leadership, but it cannot prevent a massive gene flow and a dramatic decrease in differences across subpopulations after only one or two generations.

In the international context, such a study may be useful to assess the minimum level of connection required to compare the genetic levels between countries and thus derive conversion formulae between countries, as in dairy cattle.

This study is also an illustration of the complex relationships existing between selection strategy and selection efficiency. Chevalet (1974), Katz and Young (1975), Madalena and Robertson (1975), Wright (1978), and more recently Smith and Banos (1991) and Smith and Quinton (1993) studied the relative efficiency of selection within large populations or in populations divided into several more or less connected subpopulations. In this respect, connectedness can be viewed as an intermediate and flexible policy between selection across subpopulations (family, strain, etc) and selection in a single whole population.

REFERENCES

- Richard M (1971) Dissemination of genetic improvement through a livestock industry. *Anim Prod* 13, 401-411
- Bose RC (1947) Presidential Address. *Proc 34th Indian Sci Congress*
- Burrows PM (1984) Inbreeding under selection from unrelated families. *Biometrics* 40, 357-366
- Chevalet C (1974) Nouvelles voies d'approche pour les études génétiques des populations animales. In: *1st World Congress of Genetics Applied to Livestock Production, Madrid, Spain, October 7-11*, Madrid Editorial Garsi, 2, 327-343
- Ducrocq V, Quaas RL (1988) Prediction of genetic response to truncation selection across generations. *J Dairy Sci* 71, 2543-2553
- Fernando RL, Gianola D, Grossman M (1983) Identifying all connected subsets in a two-way classification without interaction. *J Dairy Sci* 66, 1399-1402
- Foulley JL, Clerget Darpoux F (1978) Progeny group size for evaluating natural service bulls using AI reference sires. *Ann Génét Sél Anim* 10, 541-556
- Foulley JL, Ménissier F (1978) Arguments in favour of an evaluation system for natural service bulls belonging to beef breeds, by taking into account the diffusion of the best AI bulls. *Charolais* 52, 53-57
- Foulley JL, Bibé B (1979) Utilisation conjointe de l'insémination artificielle et de la saillie naturelle en vue de l'indexation des reproducteurs. In: *5^e journée de la recherche ovine et caprine, Paris, 5-6 December 1979*, INRA-ITOVIC, 205-211
- Foulley JL, Sapa J (1982) The French evaluation program for natural service beef bulls using AI sire progeny as herd ties. *Digest* 37, 64-67
- Foulley JL, Schaeffer LR, Song H, Wilton JW (1983) Progeny group size in an organized progeny test program of AI beef bulls using reference sires. *Can J Anim Sci* 63, 17-26
- Foulley JL, Bouix J, Goffinet B, Elsen JM (1984) Comparaison de pères et connexion. In: *Insémination artificielle et amélioration génétique : Bilan et perspectives critiques* (JM Elsen, JL Foulley, eds), Colloque de l'INRA, Toulouse-Auzeville, France, 23-24 November, 29, 131-176

- Foulley JL, Bouix J, Goffinet B, Elsen JM (1990) Connectedness in genetic evaluation. In: *Advances in Statistical Methods for Genetic Improvement of Livestock* (D Gianola, K Hammond, eds), Springer-Verlag, Heidelberg, 277-308
- Foulley JL, Hanocq E, Boichard D (1992) A criterion for measuring the degree of connectedness in linear models of genetic evaluation. *Genet Sel Evol* 24, 315-330
- James JW (1982) Influences of population structure and size on genetic progress. In: *Proc Wld Cong Sheep and Beef Cattle Breed* (RA Barton, WC Smith, eds), Palmerston North, New Zealand, 3-12 November, 1, 283-290
- Katz AJ, Young SSY (1975) Selection for high adult body weight in *Drosophila* populations with different structures. *Genetics* 81, 163-175
- Kennedy BW, Trus D (1993) Considerations on genetic connectedness between management units under an animal model. *J Anim Sci* 71, 2341-2352
- Lalœ D (1993) Precision and information in linear models of genetic evaluation. *Genet Sel Evol* 25, 557-576
- Madalena FE, Robertson A (1975) Population structure in artificial selection: studies with *Drosophila melanogaster*. *Genet Res Camb* 24, 113-126
- Miraei Ashtiani SR, James JW (1991) Efficient use of link rams in Merino sire reference schemes. *Proc Aust Assoc Anim Breed Genet* 9, 388-391
- Miraei Ashtiani SR, James JW (1992) Optimum distribution of progeny in sire reference schemes. *Proc Aust Assoc Anim Breed Genet* 10, 476-479
- Miraei Ashtiani SR, James JW (1993) Optimum family size for progeny testing in populations with different strains. *Genet Sel Evol* 25, 339-352
- Morris CA, Jones LP, Hopkins IR (1980) Relative efficiency of individual selection and reference sire progeny test schemes for beef production. *Aust J Agric Res* 31, 601-613
- Perez-Enciso M, Misztal I, Elzo MA (1994) FSPAK: an interface for public domain sparse matrix subroutines. In: *5th World Congress on Genetics Applied to Livestock Production. Guelph, Ontario, Canada, August 7-12* (C Smith et al, eds), 22, 87-88
- Petersen PH (1978) A test for connectedness fitted for the two-way BLUP sire evaluation. *Acta Agric Scand* 28, 360-362
- Quinton M, Smith C, Goddard ME (1992) Comparison of selection methods at the same level of inbreeding. *J Anim Sci* 70, 1060-1067
- Robertson A (1961) Inbreeding in selection programmes. *Genet Res* 2, 189-194
- Searle SR (1986) *Linear Models*. Wiley, New York
- Simianer H (1991) Prospects for third generation methods of genetic evaluation. In: *42nd Annual Meeting of the EAAP, Berlin, Germany, Sept 8-12*, 13 p
- Smith C, Ruane J (1987) Use of sib testing as a supplement to progeny testing to improve the genetic merit of commercial semen in dairy cattle. *Can J Anim Sci* 67, 985-990
- Smith C, Banos G (1991) Selection within and across populations in livestock improvement. *J Anim Sci* 69, 2387-2394
- Smith C, Quinton M (1993) Effect of selection in sublines and crossing on genetic response and inbreeding. *J Anim Sci* 71, 2631-2638
- Spike PL, Freeman AE (1977) Effect of genetic differences among herds on accuracy of selection and expected genetic change. *J Dairy Sci* 60, 967-974
- Verrier E, Colleau JJ, Foulley JL (1990) Predicting cumulated response to directional selection in finite panmictic populations. *Theor Appl Genet* 79, 833-840
- Weeks DL, Williams DR (1964) A note on the determination of connectedness in an N -way cross classification. *Technometrics* 6, 319-324
- Wray NR, Thompson R (1990) Prediction of inbreeding in selected populations. *Genet Res* 55, 41-54
- Wright S (1978) The relation of livestock breeding to theories of evolution. *J Anim Sci* 46, 1192-1200